

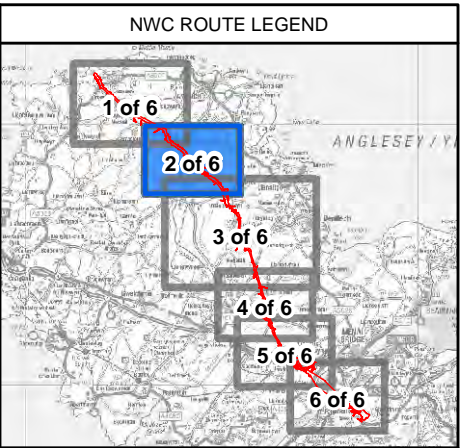
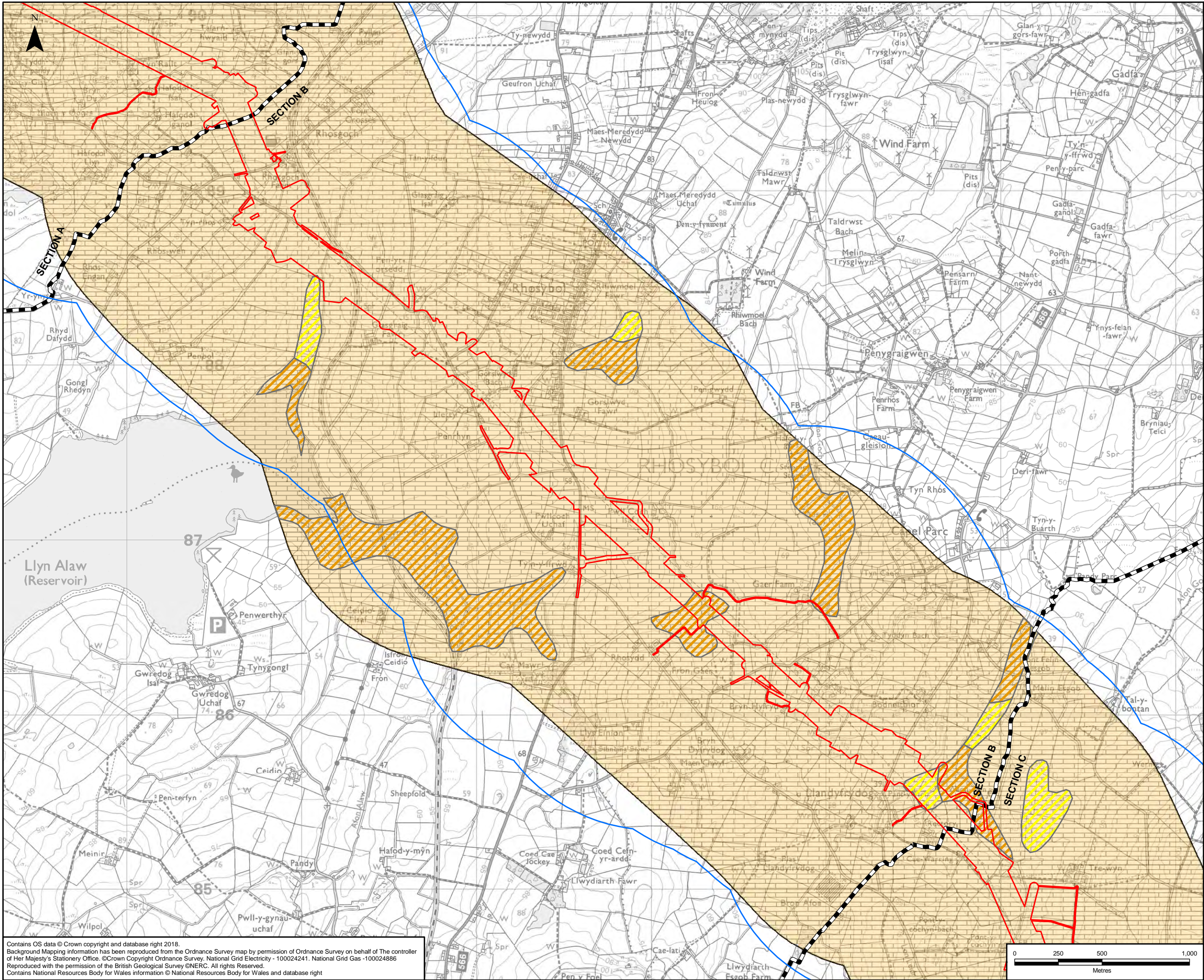
DOCUMENT 5.11.1.4

Bedrock Hydrogeology Chapter 11 – Figure 4

National Grid (North Wales Connection Project)

*Regulation 5(2)(a) including (l) and (m) of the Infrastructure Planning
(Applications: Prescribed Forms and Procedure) Regulations 2009*

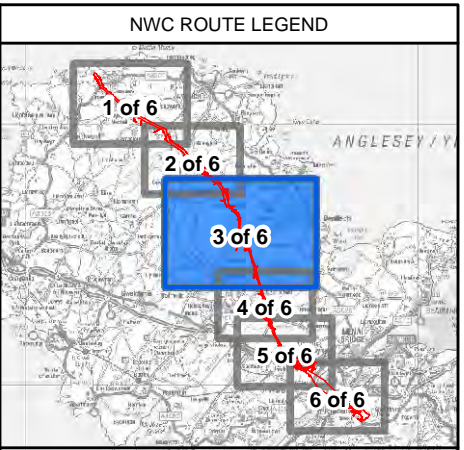
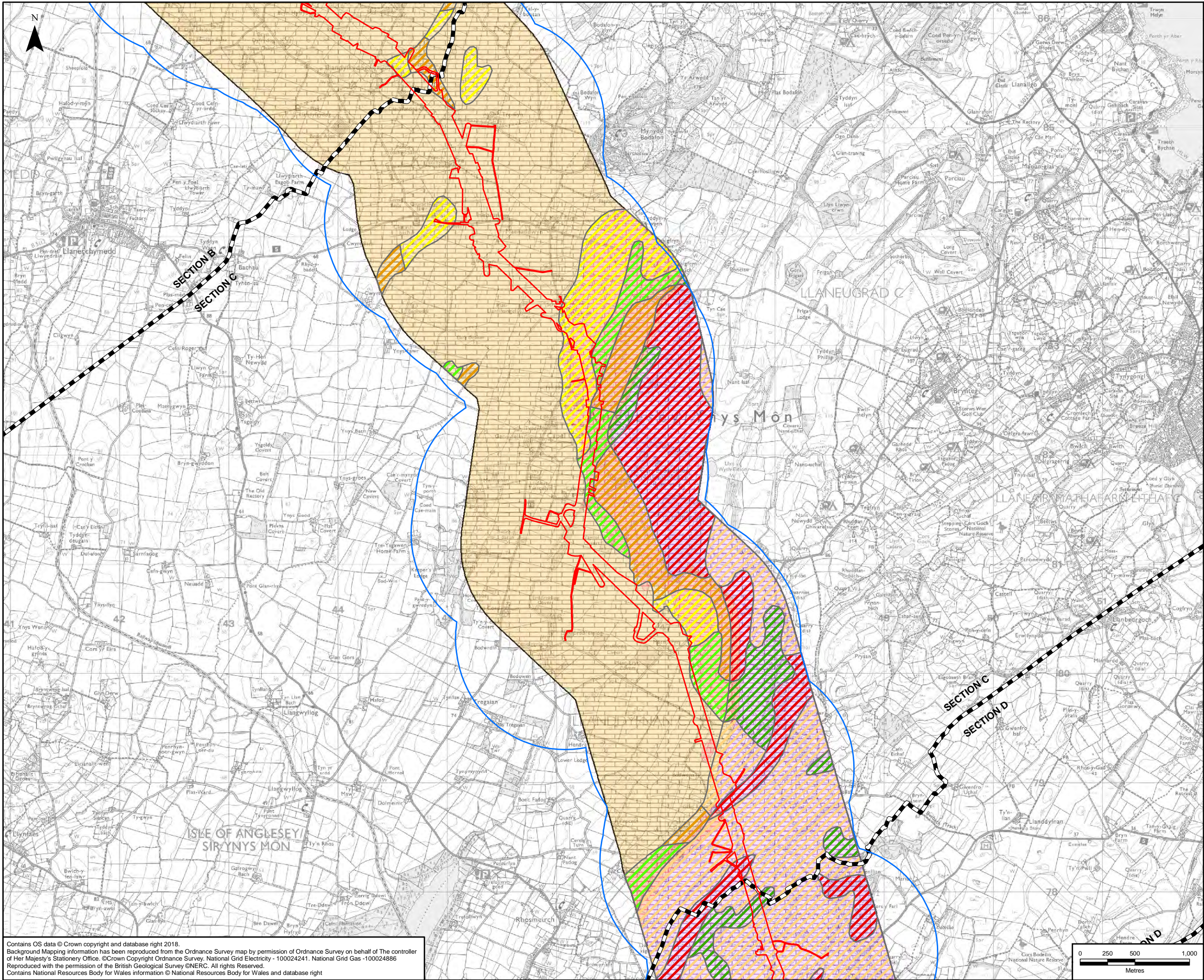




- LEGEND**
- ORDER LIMITS
 - 1KM BUFFER OF ORDER LIMITS
 - DATA SEARCH AREA¹
 - SECTION CUTLINES
 - GROUNDWATER VULNERABILITY (NRW)**
 - MINOR AQUIFER/LOW LEACHING POTENTIAL
 - MAJOR AQUIFER/LOW LEACHING POTENTIAL
 - MINOR AQUIFER/INTERMEDIATE LEACHING POTENTIAL
 - MAJOR AQUIFER/INTERMEDIATE LEACHING POTENTIAL
 - MINOR AQUIFER/HIGH LEACHING POTENTIAL
 - MAJOR AQUIFER/HIGH LEACHING POTENTIAL
 - BEDROCK AQUIFER (BGS)**
 - PRINCIPAL BEDROCK AQUIFER
 - SECONDARY (A) BEDROCK AQUIFER - PERMEABLE LAYERS
 - SECONDARY (B) BEDROCK AQUIFER - LOWER PERMEABILITY LAYERS
 - SECONDARY BEDROCK AQUIFER UNDIFFERENTIATED LAYERS
 - UNPRODUCTIVE BEDROCK AQUIFER

NOTES					
1: DATA SEARCH UNDERTAKEN IN 2018					
A	29/06/2018	ENVIRONMENTAL STATEMENT	JB	WH	NS
Rev	Date	Description	GIS	Chk	App
nationalgrid					
Scheme: NORTH WALES CONNECTION PROJECT					
Document Number: 5.11.1.4					
Document Title: FIGURE 11.4 BEDROCK HYDROGEOLOGY SECTION B					
Creator: JB	Date: 29/06/2018	Checker: WH	Date: 29/06/2018	Approver: NS	Date: 29/06/2018
Document Type: FIGURE	Scale: 1:20,000	Format: A3	Sheets: 2 of 6	Rev: A	

Contains OS data © Crown copyright and database right 2018.
Background Mapping information has been reproduced from the Ordnance Survey map by permission of Ordnance Survey on behalf of The controller of Her Majesty's Stationery Office. © Crown Copyright Ordnance Survey, National Grid Electricity - 100024241. National Grid Gas - 100024886
Reproduced with the permission of the British Geological Survey ©NERC. All rights Reserved.
Contains National Resources Body for Wales information © National Resources Body for Wales and database right



LEGEND

- ORDER LIMITS - OPTION A
- 1KM BUFFER OF ORDER LIMITS - OPTION A
- DATA SEARCH AREA ¹
- SECTION CUTLINES

GROUNDWATER VULNERABILITY (NRW)

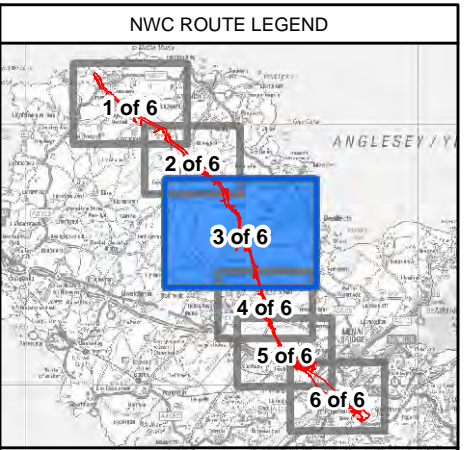
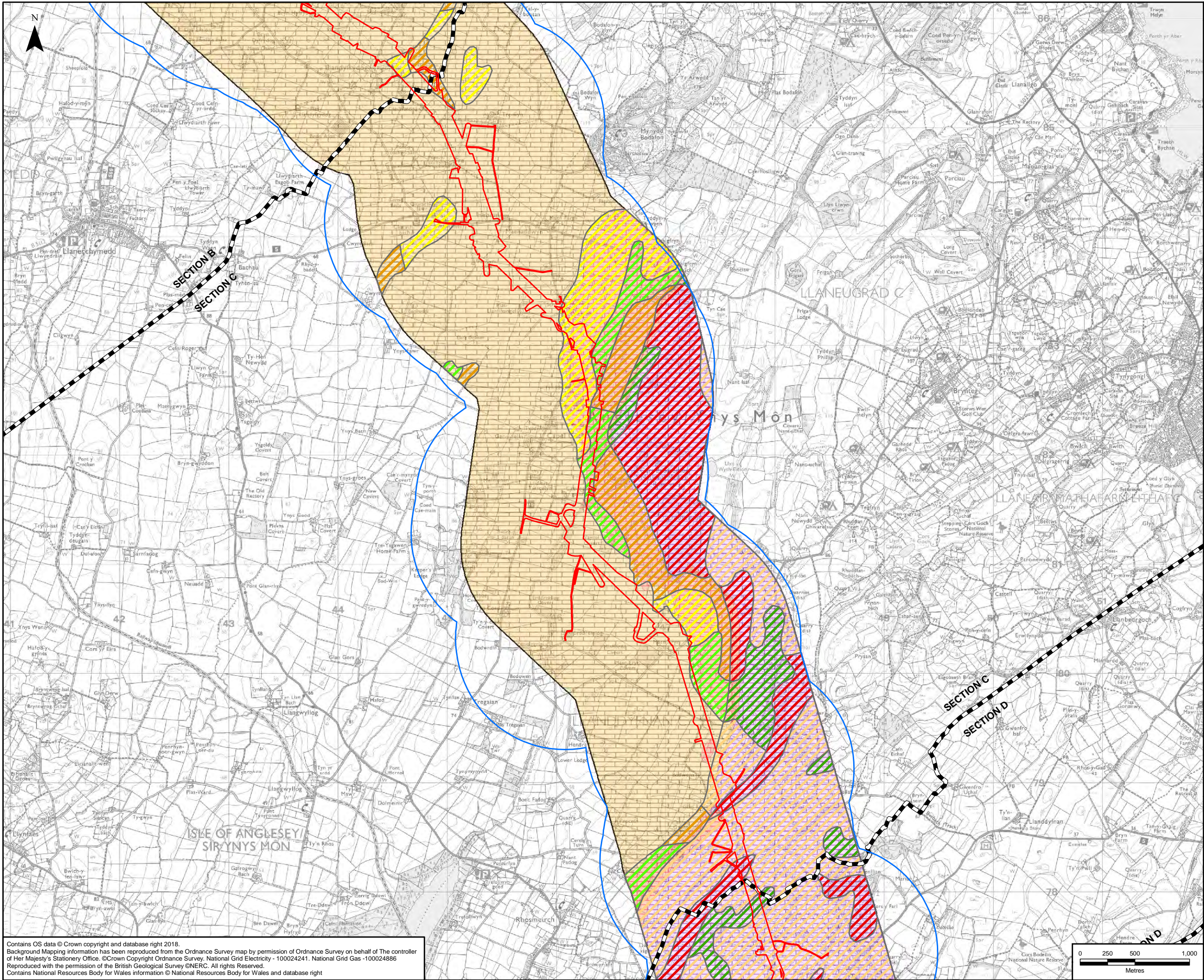
- MINOR AQUIFER/LOW LEACHING POTENTIAL
- MAJOR AQUIFER/LOW LEACHING POTENTIAL
- MINOR AQUIFER/INTERMEDIATE LEACHING POTENTIAL
- MAJOR AQUIFER/INTERMEDIATE LEACHING POTENTIAL
- MINOR AQUIFER/HIGH LEACHING POTENTIAL
- MAJOR AQUIFER/HIGH LEACHING POTENTIAL

BEDROCK AQUIFER (BGS)

- PRINCIPAL BEDROCK AQUIFER
- SECONDARY (A) BEDROCK AQUIFER - PERMEABLE LAYERS
- SECONDARY (B) BEDROCK AQUIFER - LOWER PERMEABILITY LAYERS
- SECONDARY BEDROCK AQUIFER UNDIFFERENTIATED LAYERS
- UNPRODUCTIVE BEDROCK AQUIFER

NOTES					
1: DATA SEARCH UNDERTAKEN IN 2018					
A	29/06/2018	ENVIRONMENTAL STATEMENT	JB	WH	NS
Rev	Date	Description	GIS	Chk	App
nationalgrid					
Scheme: NORTH WALES CONNECTION PROJECT					
Document Number: 5.11.1.4					
Document Title: FIGURE 11.4 BEDROCK HYDROGEOLOGY SECTION C OPTION A					
Creator:	Date:	Checker:	Date:	Approver:	Date:
JB	29/06/2018	WH	29/06/2018	NS	29/06/2018
Document Type:	Scale:	Format:	Sheets:	Rev:	
FIGURE	1:32,000	A3	3 of 6 Option A	A	

Contains OS data © Crown copyright and database right 2018.
Background Mapping information has been reproduced from the Ordnance Survey map by permission of Ordnance Survey on behalf of The controller of Her Majesty's Stationery Office. © Crown Copyright Ordnance Survey, National Grid Electricity - 100024241. National Grid Gas - 100024886
Reproduced with the permission of the British Geological Survey © NERC. All rights Reserved.
Contains National Resources Body for Wales information © National Resources Body for Wales and database right



LEGEND

- ORDER LIMITS - OPTION B
- 1KM BUFFER OF ORDER LIMITS - OPTION B
- DATA SEARCH AREA ¹
- SECTION OUTLINES

GROUNDWATER VULNERABILITY (NRW)

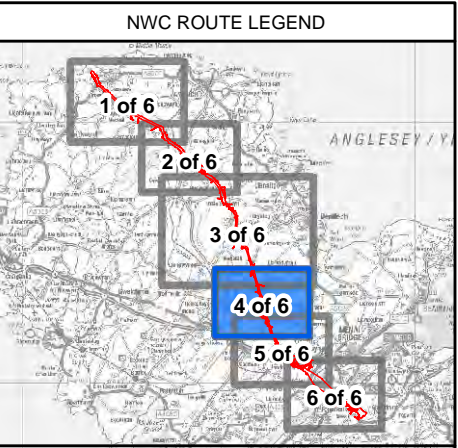
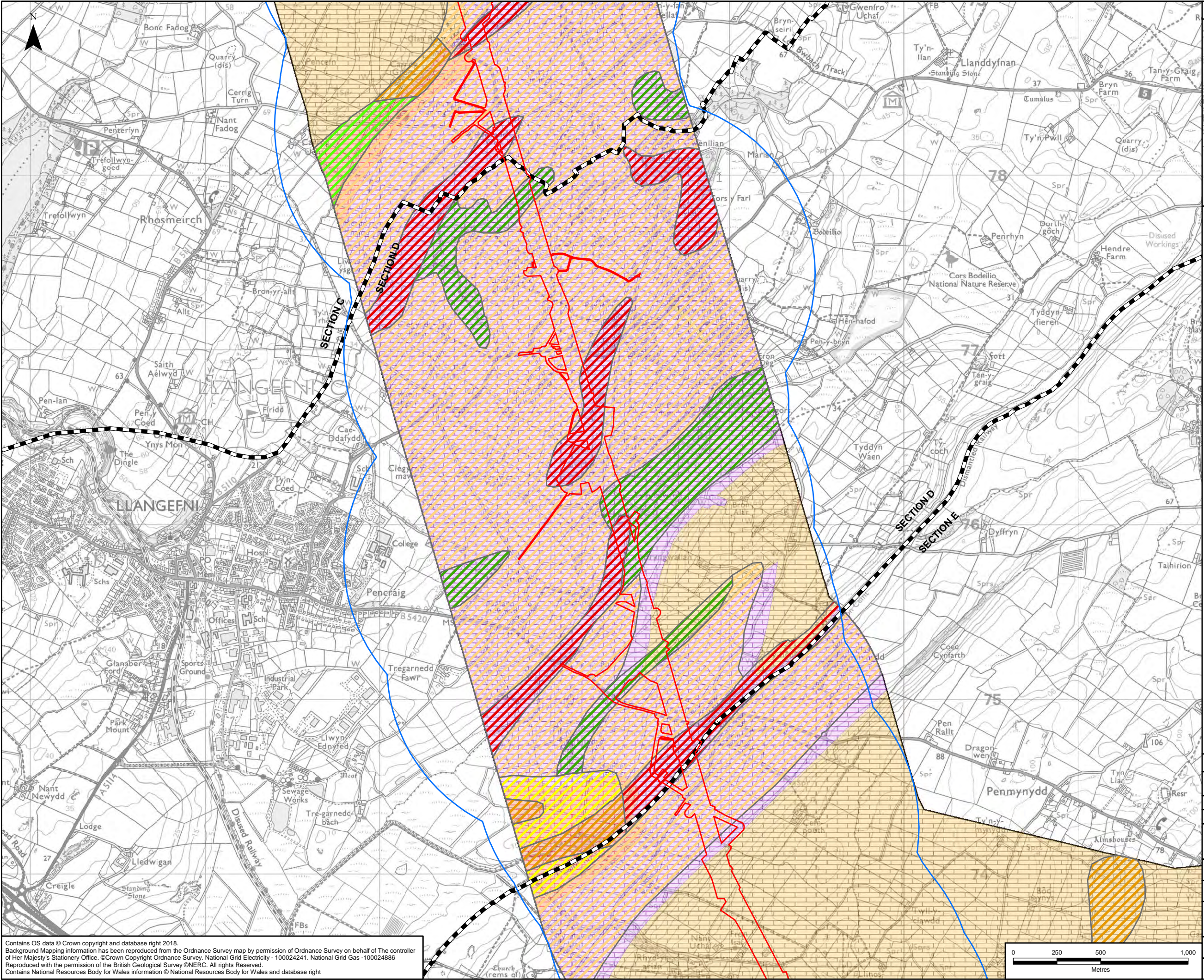
- MINOR AQUIFER/LOW LEACHING POTENTIAL
- MAJOR AQUIFER/LOW LEACHING POTENTIAL
- MINOR AQUIFER/INTERMEDIATE LEACHING POTENTIAL
- MAJOR AQUIFER/INTERMEDIATE LEACHING POTENTIAL
- MINOR AQUIFER/HIGH LEACHING POTENTIAL
- MAJOR AQUIFER/HIGH LEACHING POTENTIAL

BEDROCK AQUIFER (BGS)

- PRINCIPAL BEDROCK AQUIFER
- SECONDARY (A) BEDROCK AQUIFER - PERMEABLE LAYERS
- SECONDARY (B) BEDROCK AQUIFER - LOWER PERMEABILITY LAYERS
- SECONDARY BEDROCK AQUIFER UNDIFFERENTIATED LAYERS
- UNPRODUCTIVE BEDROCK AQUIFER

NOTES					
1: DATA SEARCH UNDERTAKEN IN 2018					
A	29/06/2018	ENVIRONMENTAL STATEMENT	JB	WH	NS
Rev	Date	Description	GIS	Chk	App
nationalgrid					
Scheme: NORTH WALES CONNECTION PROJECT					
Document Number: 5.11.1.4					
Document Title: FIGURE 11.4 BEDROCK HYDROGEOLOGY SECTION C OPTION B					
Creator: JB	Date: 29/06/2018	Checker: WH	Date: 29/06/2018	Approver: NS	Date: 29/06/2018
Document Type: FIGURE	Scale: 1:32,000	Format: A3	Sheets: 3 of 6 Option B	Rev: A	

Contains OS data © Crown copyright and database right 2018.
Background Mapping information has been reproduced from the Ordnance Survey map by permission of Ordnance Survey on behalf of The controller of Her Majesty's Stationery Office. © Crown Copyright Ordnance Survey, National Grid Electricity - 100024241. National Grid Gas - 100024886
Reproduced with the permission of the British Geological Survey ©NERC. All rights Reserved.
Contains National Resources Body for Wales information © National Resources Body for Wales and database right



LEGEND

- ORDER LIMITS - OPTION A
- 1KM BUFFER OF ORDER LIMITS - OPTION A
- DATA SEARCH AREA 1
- SECTION COUTLINES

GROUNDWATER VULNERABILITY (NRW)

- MINOR AQUIFER/LOW LEACHING POTENTIAL
- MAJOR AQUIFER/LOW LEACHING POTENTIAL
- MINOR AQUIFER/INTERMEDIATE LEACHING POTENTIAL
- MAJOR AQUIFER/INTERMEDIATE LEACHING POTENTIAL
- MINOR AQUIFER/HIGH LEACHING POTENTIAL
- MAJOR AQUIFER/HIGH LEACHING POTENTIAL

BEDROCK AQUIFER (BGS)

- PRINCIPAL BEDROCK AQUIFER
- SECONDARY (A) BEDROCK AQUIFER - PERMEABLE LAYERS
- SECONDARY (B) BEDROCK AQUIFER - LOWER PERMEABILITY LAYERS
- SECONDARY BEDROCK AQUIFER UNDIFFERENTIATED LAYERS
- UNPRODUCTIVE BEDROCK AQUIFER

NOTES

1: DATA SEARCH UNDERTAKEN IN 2018

Rev	Date	Description	GIS	Chk	App
A	29/06/2018	ENVIRONMENTAL STATEMENT	JB	WH	NS

nationalgrid

Scheme: NORTH WALES CONNECTION PROJECT

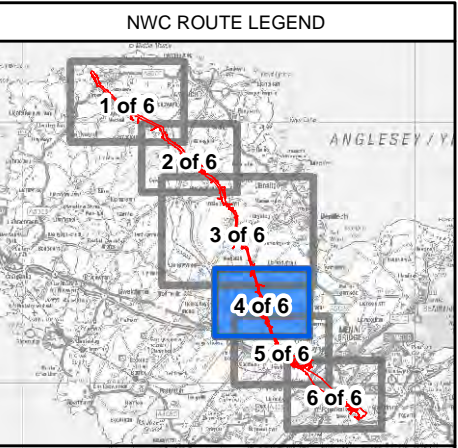
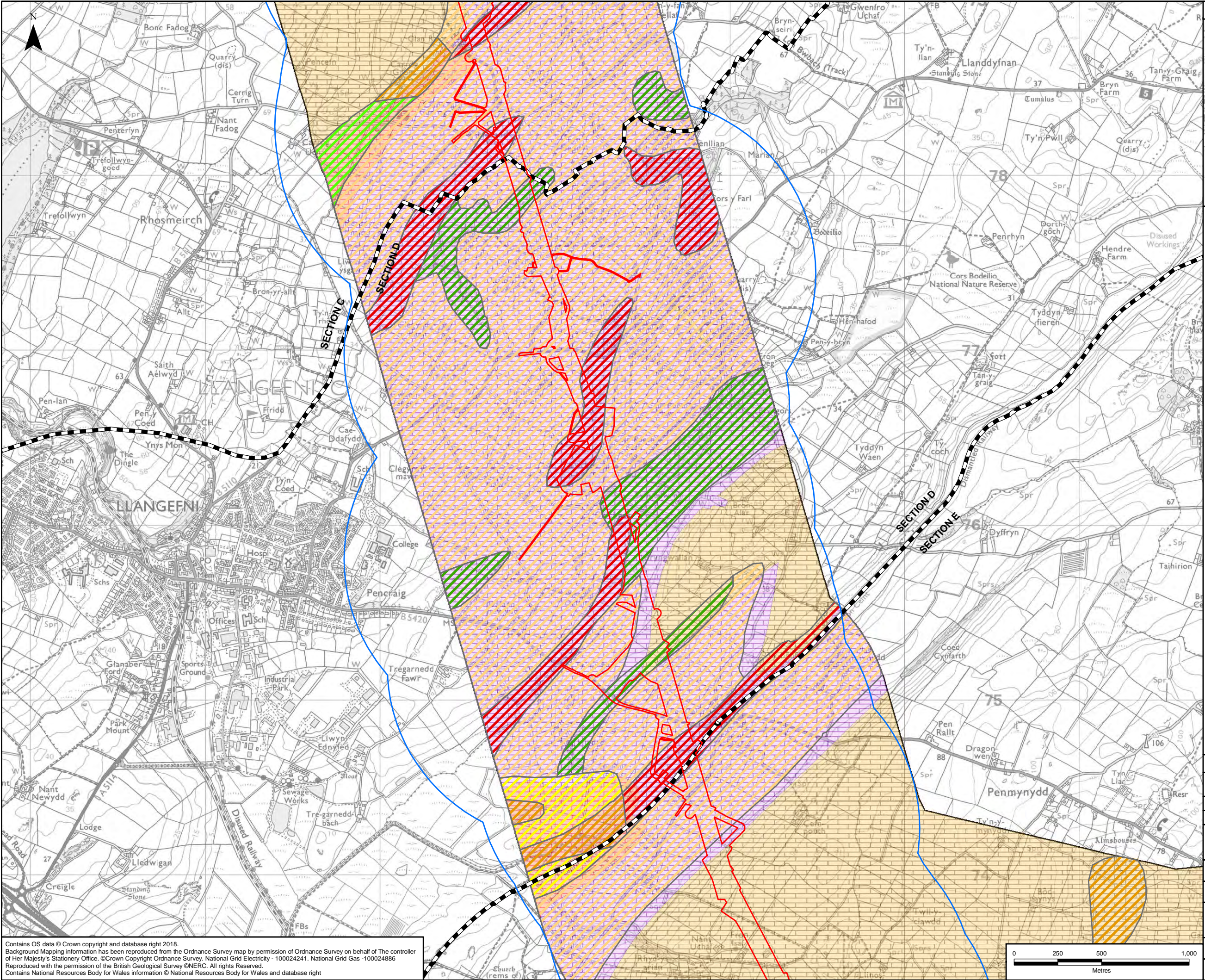
Document Number: 5.11.1.4

Document Title: FIGURE 11.4 BEDROCK HYDROGEOLOGY SECTION D OPTION A

Creator:	Date:	Checker:	Date:	Approver:	Date:
JB	29/06/2018	WH	29/06/2018	NS	29/06/2018

Document Type:	Scale:	Format:	Sheets:	Rev:
FIGURE	1:20,000	A3	4 of 6 Option A	A

Contains OS data © Crown copyright and database right 2018.
Background Mapping information has been reproduced from the Ordnance Survey map by permission of Ordnance Survey on behalf of The controller of Her Majesty's Stationery Office. © Crown Copyright Ordnance Survey, National Grid Electricity - 100024241. National Grid Gas - 100024886
Reproduced with the permission of the British Geological Survey ©NERC. All rights Reserved.
Contains National Resources Body for Wales information © National Resources Body for Wales and database right



LEGEND

- ORDER LIMITS - OPTION B
- 1KM BUFFER OF ORDER LIMITS - OPTION B
- DATA SEARCH AREA ¹
- SECTION OUTLINES

GROUNDWATER VULNERABILITY (NRW)

- MINOR AQUIFER/LOW LEACHING POTENTIAL
- MAJOR AQUIFER/LOW LEACHING POTENTIAL
- MINOR AQUIFER/INTERMEDIATE LEACHING POTENTIAL
- MAJOR AQUIFER/INTERMEDIATE LEACHING POTENTIAL
- MINOR AQUIFER/HIGH LEACHING POTENTIAL
- MAJOR AQUIFER/HIGH LEACHING POTENTIAL

BEDROCK AQUIFER (BGS)

- PRINCIPAL BEDROCK AQUIFER
- SECONDARY (A) BEDROCK AQUIFER - PERMEABLE LAYERS
- SECONDARY (B) BEDROCK AQUIFER - LOWER PERMEABILITY LAYERS
- SECONDARY BEDROCK AQUIFER UNDIFFERENTIATED LAYERS
- UNPRODUCTIVE BEDROCK AQUIFER

NOTES

1: DATA SEARCH UNDERTAKEN IN 2018

A	29/06/2018	ENVIRONMENTAL STATEMENT	JB	WH	NS
Rev	Date	Description	GIS	Chk	App

nationalgrid

Scheme: NORTH WALES CONNECTION PROJECT

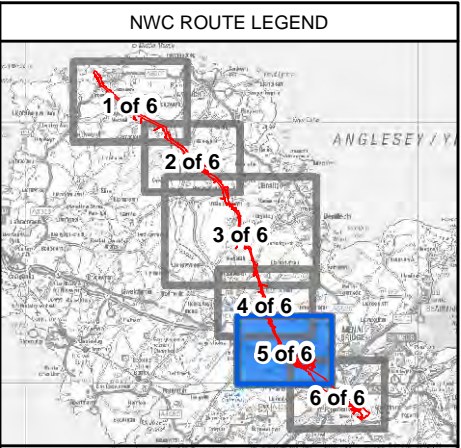
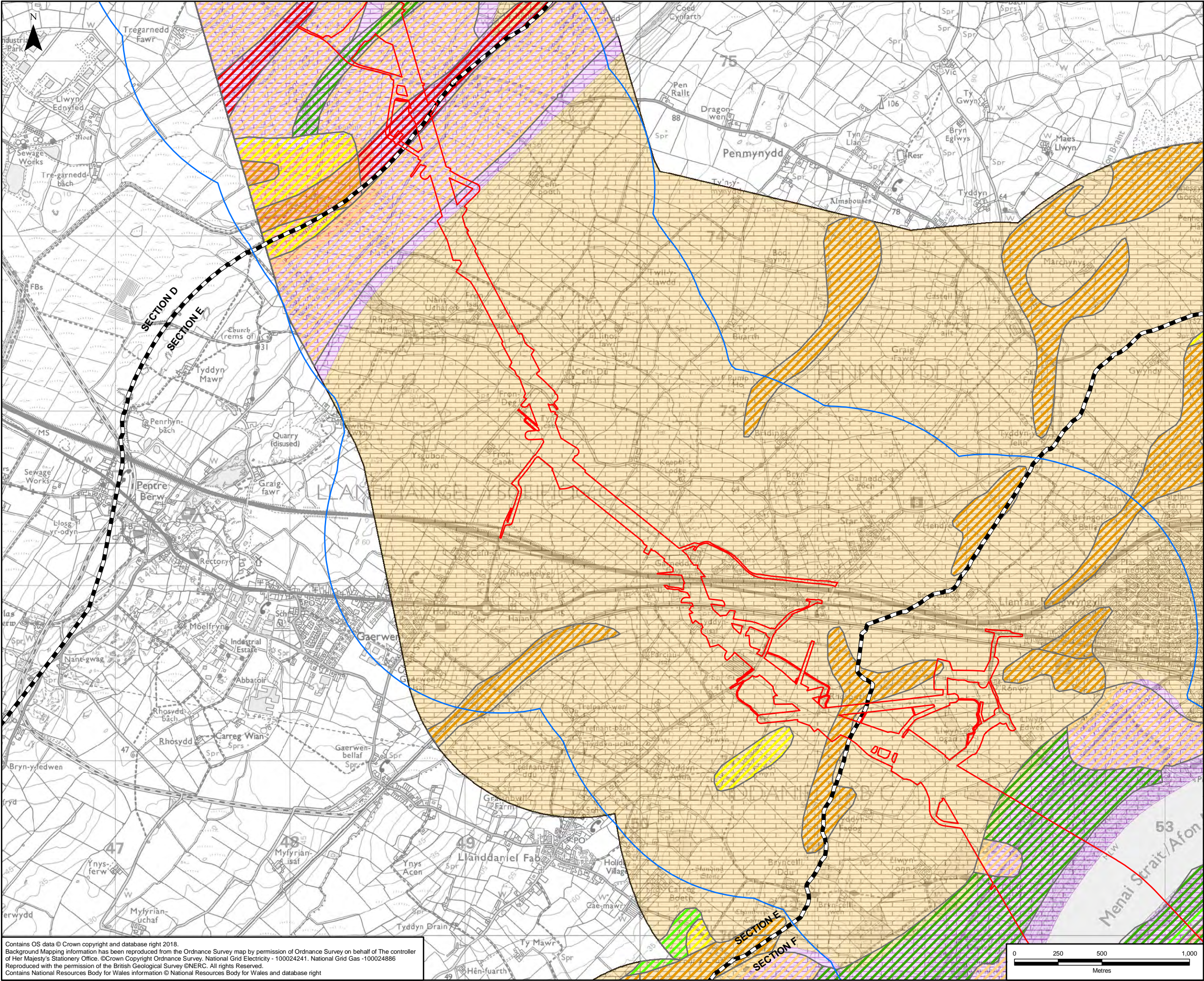
Document Number: 5.11.1.4

Document Title: FIGURE 11.4
BEDROCK HYDROGEOLOGY
SECTION D OPTION B

Creator:	Date:	Checker:	Date:	Approver:	Date:
JB	29/06/2018	WH	29/06/2018	NS	29/06/2018

Document Type:	Scale:	Format:	Sheets:	Rev:
FIGURE	1:20,000	A3	4 of 6 Option B	A

Contains OS data © Crown copyright and database right 2018.
Background Mapping information has been reproduced from the Ordnance Survey map by permission of Ordnance Survey on behalf of The controller of Her Majesty's Stationery Office. © Crown Copyright Ordnance Survey, National Grid Electricity - 100024241, National Grid Gas - 100024886
Reproduced with the permission of the British Geological Survey ©NERC. All rights Reserved.
Contains National Resources Body for Wales information © National Resources Body for Wales and database right



LEGEND

- ORDER LIMITS
- 1KM BUFFER OF ORDER LIMITS
- DATA SEARCH AREA¹
- SECTION CUTLINES

GROUNDWATER VULNERABILITY (NRW)

- MINOR AQUIFER/LOW LEACHING POTENTIAL
- MAJOR AQUIFER/LOW LEACHING POTENTIAL
- MINOR AQUIFER/INTERMEDIATE LEACHING POTENTIAL
- MAJOR AQUIFER/INTERMEDIATE LEACHING POTENTIAL
- MINOR AQUIFER/HIGH LEACHING POTENTIAL
- MAJOR AQUIFER/HIGH LEACHING POTENTIAL

BEDROCK AQUIFER (BGS)

- PRINCIPAL BEDROCK AQUIFER
- SECONDARY (A) BEDROCK AQUIFER - PERMEABLE LAYERS
- SECONDARY (B) BEDROCK AQUIFER - LOWER PERMEABILITY LAYERS
- SECONDARY BEDROCK AQUIFER UNDIFFERENTIATED LAYERS
- UNPRODUCTIVE BEDROCK AQUIFER

NOTES

1: DATA SEARCH UNDERTAKEN IN 2018

A	29/06/2018	ENVIRONMENTAL STATEMENT	JB	WH	NS
Rev	Date	Description	GIS	Chk	App

nationalgrid

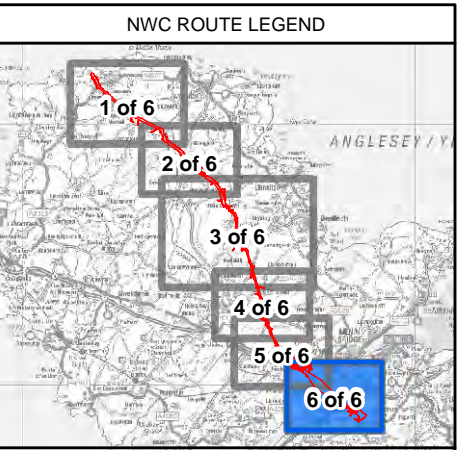
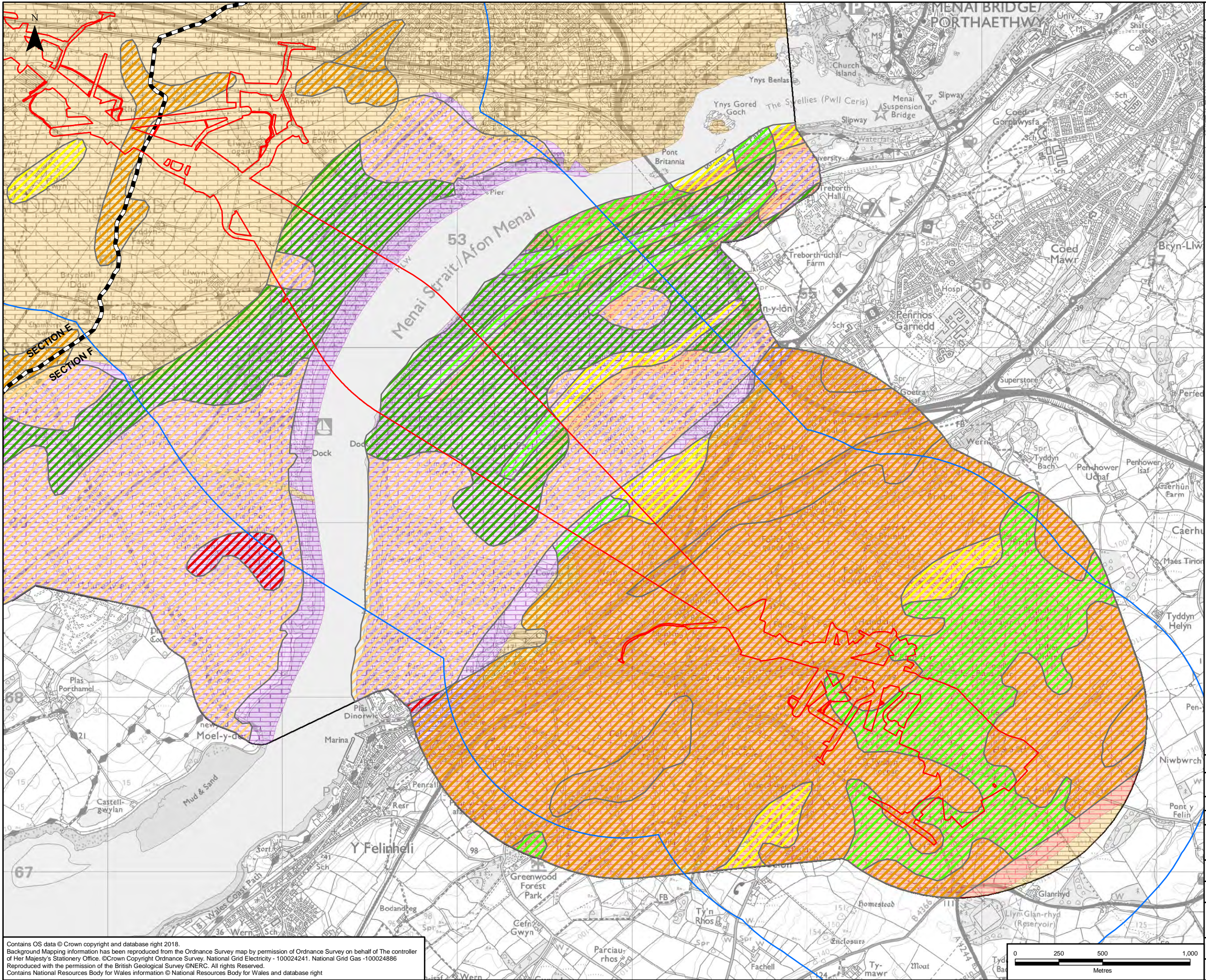
Scheme: NORTH WALES CONNECTION PROJECT

Document Number: 5.11.1.4

Document Title: FIGURE 11.4
BEDROCK HYDROGEOLOGY
SECTION E

Creator:	JB	Date:	29/06/2018	Checker:	WH	Date:	29/06/2018	Approver:	NS	Date:	29/06/2018
Document Type:	FIGURE	Scale:	1:20,000	Format:	A3	Sheets:	5 of 6	Rev:	A		

Contains OS data © Crown copyright and database right 2018.
Background Mapping information has been reproduced from the Ordnance Survey map by permission of Ordnance Survey on behalf of The controller of Her Majesty's Stationery Office. © Crown Copyright Ordnance Survey, National Grid Electricity - 100024241, National Grid Gas - 100024886
Reproduced with the permission of the British Geological Survey ©NERC. All rights Reserved.
Contains National Resources Body for Wales information © National Resources Body for Wales and database right



LEGEND

ORDER LIMITS
1KM BUFFER OF ORDER LIMITS
DATA SEARCH AREA¹
SECTION CUTLINES

GROUNDWATER VULNERABILITY (NRW)

MINOR AQUIFER/LOW LEACHING POTENTIAL
MAJOR AQUIFER/LOW LEACHING POTENTIAL
MINOR AQUIFER/INTERMEDIATE LEACHING POTENTIAL
MAJOR AQUIFER/INTERMEDIATE LEACHING POTENTIAL
MINOR AQUIFER/HIGH LEACHING POTENTIAL
MAJOR AQUIFER/HIGH LEACHING POTENTIAL

BEDROCK AQUIFER (BGS)

PRINCIPAL BEDROCK AQUIFER
SECONDARY (A) BEDROCK AQUIFER - PERMEABLE LAYERS
SECONDARY (B) BEDROCK AQUIFER - LOWER PERMEABILITY LAYERS
SECONDARY BEDROCK AQUIFER UNDIFFERENTIATED LAYERS
UNPRODUCTIVE BEDROCK AQUIFER

NOTES

1: DATA SEARCH UNDERTAKEN IN 2018

Rev	Date	Description	GIS	Chk	App
A	29/06/2018	ENVIRONMENTAL STATEMENT	JB	WH	NS

nationalgrid

Scheme: NORTH WALES CONNECTION PROJECT

Document Number: 5.11.1.4

Document Title: FIGURE 11.4
BEDROCK HYDROGEOLOGY
SECTION F

Creator:	Date:	Checker:	Date:	Approver:	Date:
JB	29/06/2018	WH	29/06/2018	NS	29/06/2018

Document Type:	Scale:	Format:	Sheets:	Rev:
FIGURE	1:20,000	A3	6 of 6	A

Contains OS data © Crown copyright and database right 2018.
Background Mapping information has been reproduced from the Ordnance Survey map by permission of Ordnance Survey on behalf of The controller of Her Majesty's Stationery Office. © Crown Copyright Ordnance Survey, National Grid Electricity - 100024241, National Grid Gas - 100024886
Reproduced with the permission of the British Geological Survey ©NERC. All rights Reserved.
Contains National Resources Body for Wales information © National Resources Body for Wales and database right